

# ASPIRE

REAL PEOPLE | REAL DESIGN | REAL ESTATE

wallpaper  
whimsy

reclaimed  
architecture  
feted  
tablescapes

INSIDE  
NEW JERSEY  
MANHATTAN  
HUDSON VALLEY  
REAL ESTATE

Geffer-Press Glass House  
MODERN TEIGER HOUSE  
Luxe Penthouses

AUTUMN  
2015  
ASPIREMETRO.COM

\$5.99US/CAN



53



“The lady of the house likes color, so we chose a vibrant palette reminiscent of Venice.”

# Blower Technicolor

There aren't too many clients or interior designers who would turn to a color palette of teal and pink. Acclaimed New York-based interior designer *John Barman* and his projects, though, are anything but typical.

**This Page:**  
**DINING ROOM**

The coffered dining room ceiling was detailed with a pop of teal paint to match the room's wallpaper and trim. Both living and dining areas share the same custom, colored rugs and teal-flocked wallpaper. The chandelier is rock crystal and the dining chairs' traditional forms are given an update with metallic pink leather.





**Left: FOYER AND STAIRCASE**  
Cherry-red lacquered walls and a black-and-white patterned stone floor give visitors to this duplex an enthusiastic reception. A geometric painting by Kelly Stuart Graham hangs in the stairwell. Barman created the interior archways, mirroring their form after the French doors that lead from the apartment's living and dining rooms onto the terrace.

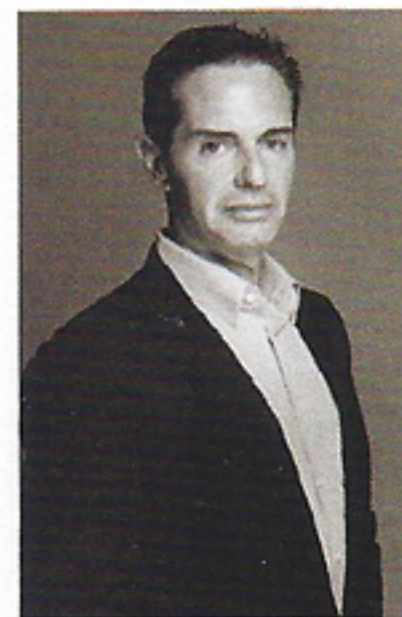


**Opposite Page: TV ROOM/DEN**  
A bold design, with a color palette of emerald green and gold. The walls are covered in a patterned green paper.

# B

## Bright and bold was the design creed

for this Manhattan apartment located in a prewar building. The property, originally owned by the opera singer Anna Moffo, comprises of two apartments that had been combined in the late 1970s. By the time the current owner got her hands on it, all of the moldings and architectural details had been removed, and it had been reworked in shades of black, gray and chrome. A spiral metal staircase had been installed to connect the two floors, and a terrace had been enclosed to create a large, but bland, solarium. The owner, however, saw the property's potential.



TEXT CHRISTINA VALHOULI  
PHOTOGRAPHY ANASTACIOS MENTIS  
INTERIOR DESIGN JOHN BARMAN, INC.

The goal was to restore some of the apartment's classical features while injecting a sense of fun. This combination of the traditional and playful is one of Barman's metaphorical arks: His signature look is a classic space spruced up with unusual textiles, colors and accessories.

"The lady of the house likes color, so we chose a vibrant palate reminiscent of Venice," explains Barman. "Having done other houses for the owner, we are on the same wave length about the updated traditional style and clear colors she likes." However, this New York apartment is not a replica of her other homes.

When tackling a project, Barman says he "always starts with the floorplan because functionality is key. How will the owners use the space? Will they cook every day or just use the dining room once a year for Thanksgiving? Is a bar space more important than the kitchen?"

Barman started by removing the spiral staircase and widening the opening to install a more traditional staircase with custom railings. A geometric painting by Kelly Stuart Graham now hangs in the stairwell. The foyer's floor was replaced with black and white stones laid in a geometric pattern, and as a wow factor, the walls were treated in a lacquered fuchsia with white trim and black doors. Barman also created the interior archways, which mirror the French doors that lead from the apartment's living and dining rooms onto the terrace.

A lack of natural light proved to be a major challenge, so Barman used a vibrant color palette throughout the property to brighten the space.

The dining room's color palette of teal and pink – including a teal coffered ceiling – compliments the art in the room. The dining chairs have a traditional silhouette but were updated with metallic pink leather and striped velvet fabric. Texture was



**Above Left: STUDY** The flock green paper on gold in the study sets a luxurious mood. **Above Right: BEDROOM** Barman opted for a different color palette in the master bedroom. The silver foil paper from Pierre Frey sets an elegant, feminine, restful tone. Custom lambrequins and cornice window treatments, along with a bespoke upholstered headboard, complete the space.

“The green study is warm and inviting, and it can also serve as a guest room,” states Barman, whose work is inspired by David Hicks and Billy Baldwin.

brought in through a flocked-velvet wallpaper from Osborne and Little, and a custom rug repeats the same color scheme. New wood floors laid in a herringbone pattern were also installed.

The TV room/den has a similarly bold design, with a color palette of emerald green and gold; the walls are covered in a patterned green paper. A different color palette was introduced in the master bedroom, which has a more calming, soothing vibe, thanks to a pale, silver wallpaper from Pierre Frey and watery hues. Custom lambrequins and cornice window treatments, along with a bespoke upholstered headboard, complete the space.

Barman says he’s a huge fan of wallcoverings so a place “isn’t all sheetrock,” and mixing wallpaper in the penthouse helped establish a distinct mood in each space.

“The textures and materials in wallpaper are a juxtaposition that give

wonderful looks and set a mood not possible to establish with paint,” shares Barman. “The flock green paper on gold in the study sets a luxurious mood, while the silver foil paper in the master bedroom sets an elegant, feminine, restful tone.”

The long, narrow solarium provided another challenge. Barman says the double-height space lacked warmth, so he added a wall of built-in bookshelves and installed a new stone floor. The room is now flanked by a custom, 20-foot long sofa and a TV. With four adult children, the owner wanted the apartment to be roomy, so Barman upholstered the sofa in an indoor/outdoor blue velvet to be near indestructible.

“The blue and white scheme and the reflective quality of the new flooring make the room appear to float above the city,” tells Barman, providing insight into another Barman hallmark: achieving what others find impossible and turning the ordinary into the extraordinary. ■



**This Page: SOLARIUM** A wall of built-in bookshelves and a 20-foot long sofa upholstered in an indoor/outdoor blue velvet help to warm the double-height space.

"The blue and white scheme and the reflective quality of the new flooring make the room appear to float above the city," tells Barman, providing insight to another Barman hallmark.